

Q: Where to next?

A: Right next door!



**EDUCATE THE CHILDREN
NEPAL**

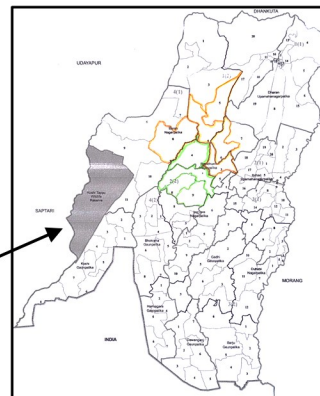
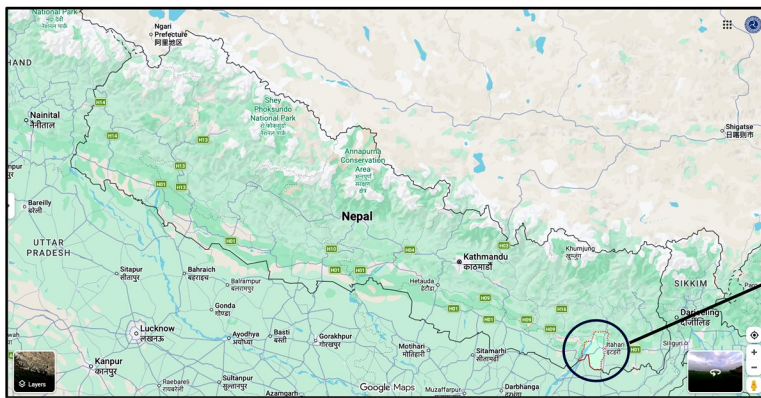
In summer 2026, we'll come to the end of our current program cycle. We'll phase out of where we've been working since 2020 and begin working in five adjacent wards to the immediate north: Wards 3 and 6 of Ramdhuni Municipality and Wards 4, 5, and 8 of Barahachhetra Municipality.

There are many advantages to moving next door, including:

- ETC is welcome and respected around there already, and our work is very much wanted;
- We can continue to work in the field with our valued local program partner, Save the Earth;
- We already have strong relationships with local and regional government personnel and other stakeholders; and
- We are familiar with the area and relevant factors such as climate, languages, cultural traditions, access to markets, economic conditions, etc.



Above:
Smita has a thriving market gardening business, thanks to her own hard work and her participation in ETC's programs



Left:
Map of current (green lines) and new (orange lines) program area

We will expand our services while continuing to work directly with and for the people and schools in greatest need of our programs:

- We aim to include 1,500 socioeconomically marginalized women in our women's groups and sustainable agricultural development training activities. This represents a 50% increase in women's group membership over our current program cycle.
- We plan to work with 14-16 primary and secondary schools, up from 12 currently. Students at these schools come disproportionately from disadvantaged backgrounds.

YES! I will help ETC start strong in a new, expanded area!

You can make a secure online gift at www.etc-nepal.org/donate/

If you prefer to write a check or to have us process your credit card gift, please fill out the following:

Name: _____

Address: _____

Phone: _____ E-mail: _____

Amount: \$2,000 \$1,000 \$500 \$250 \$100 \$50 \$30 Other (in U.S. \$) _____

Check enclosed OR Charge my credit card: Visa MC Amex Discover

Card #: _____ Exp. date: _____ 3-digit code on back (req'd): _____

Clip and mail this form to ETC, P.O. Box 414, Ithaca, NY 14851-0414

The data table below illustrates certain general statistical features of these wards. We are currently undertaking a baseline study to gain a deeper understanding of the real on-the-ground conditions, challenges, and needs. We will then develop our five-year program plan and budget accordingly – focusing initially on the foundational work including establishing women’s groups, ensuring that even landless women (of whom we’re sure there will be many) can grow kitchen gardens, and working with parents and school personnel to boost and maintain students’ attendance rates.

This sounds like an ambitious plan, and it will certainly cost more to put into action, but it’s absolutely achievable – with your support!

Will you please help ETC get off to a strong start in our new program area by making a generous gift today?



	Ramdhuni 3 & 6	Barahachhetra 4, 5, & 8
Population		
<i>Male</i>	7,605	12,234
<i>Female</i>	8,548	13,859
<i>Total</i>	16,153	26,093
Women-headed households	33.4%	39.0%
Households w/ daughters married by age 18	Appx. 14%	Appx. 20%
Official literacy rate*	Ramdhuni all wards	Barahachhetra all wards
<i>Men</i>	85.3%	85.1%
<i>Women</i>	70.5%	71.6%
<i>Total (age 15+)</i>	77.4%	77.9%

*Statistics:
National Population and Housing Census 2011, published by the National Statistics Office of the Government of Nepal*

*Maps:
Google Maps and Sunsari Electoral District Map*





** Based on our experience, the official literacy rate figures may be high, especially for our target population consisting of disadvantaged people*

MEET DAYAMANTI! Watch our video, beautifully created by Cryptid Films, to see what a life-changing difference ETC’s work has made for Dayamanti Sada (and countless women like her!).

<https://tinyurl.com/dayamanti>

Visit our new **GlobalGiving project** about our sustainable agricultural development plans and activities in the new program area!

<http://goto.gg/67114>

-  @EducateTheChildrenNepal
-  @etc_nepal
-  @educatethechildren
-  @etc-nepal.bsky.social



Educate the Children

PO Box 414
Ithaca, NY 14851-0414
USA